

ExaSAN/Gamma Carry Profile

8-bay

**8-bay Tower
RAID system**

**Interfac
e**

**Dual
Thunderbolt 3
ports (40 Gb/s)**

**RAID
Level**

**RAID Levels
0, 1, 0+1, 5, 6 &
JBOD**

**Weight/
Dimensio
n**

**5.2kg / 11.5 lbs
240 x 150 x 318
(L x W x H, mm)**

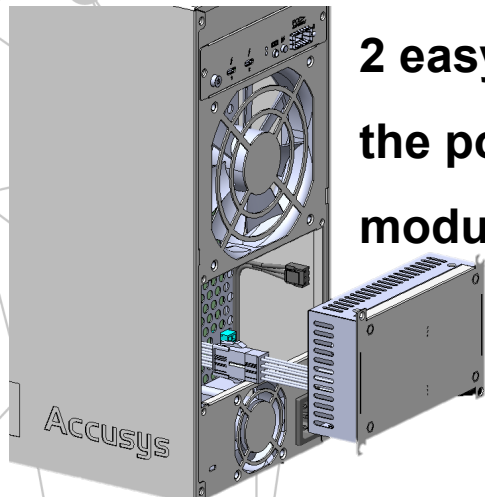


***ExaSAN Carry has
an additional PCIe
port.**

User-Friendly

User-serviceable Part Modules

2 easy steps to replace
the power and fan
modules



LED on/off button

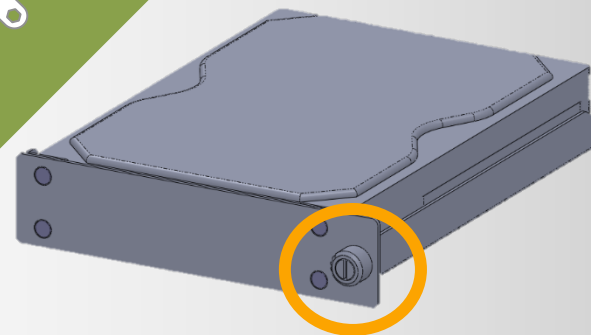
colorists can focus on their
work without being
disturbed



<45dB

Less than 45dB

perfect for colorists to
place on their desktop



Thumb screw

With the thumb screw, locking
up HDD has never been easier.

Easy to Carry

The world's smallest 3.5" 8-bay RAID system

Portable



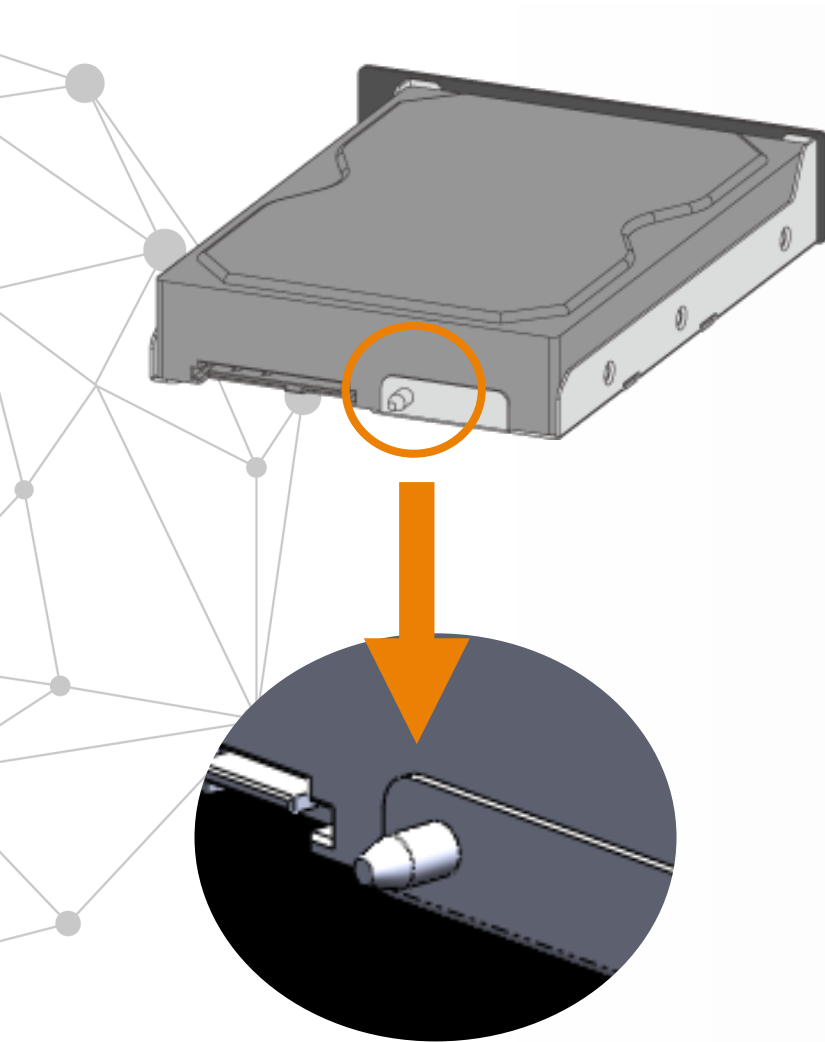
Fit in Pelican Case



PELICAN
1510 CASE



Patent Technology

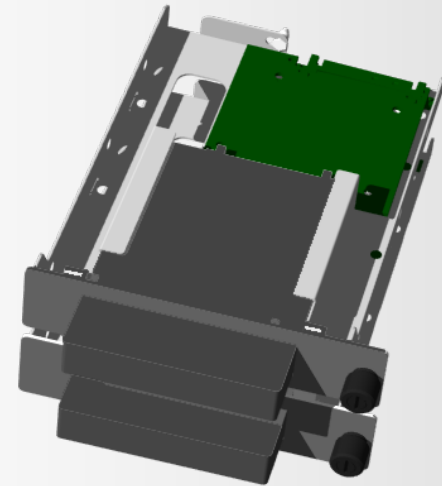
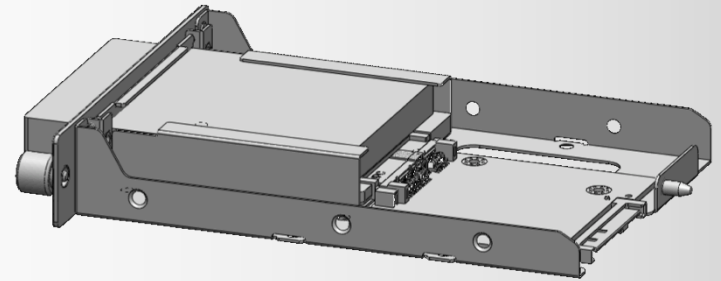


The newly designed **disk tray positioning pin** can reduce risk of damage to the disks and backplane caused by shock or vibration during transportation.

SSD Portable Tray

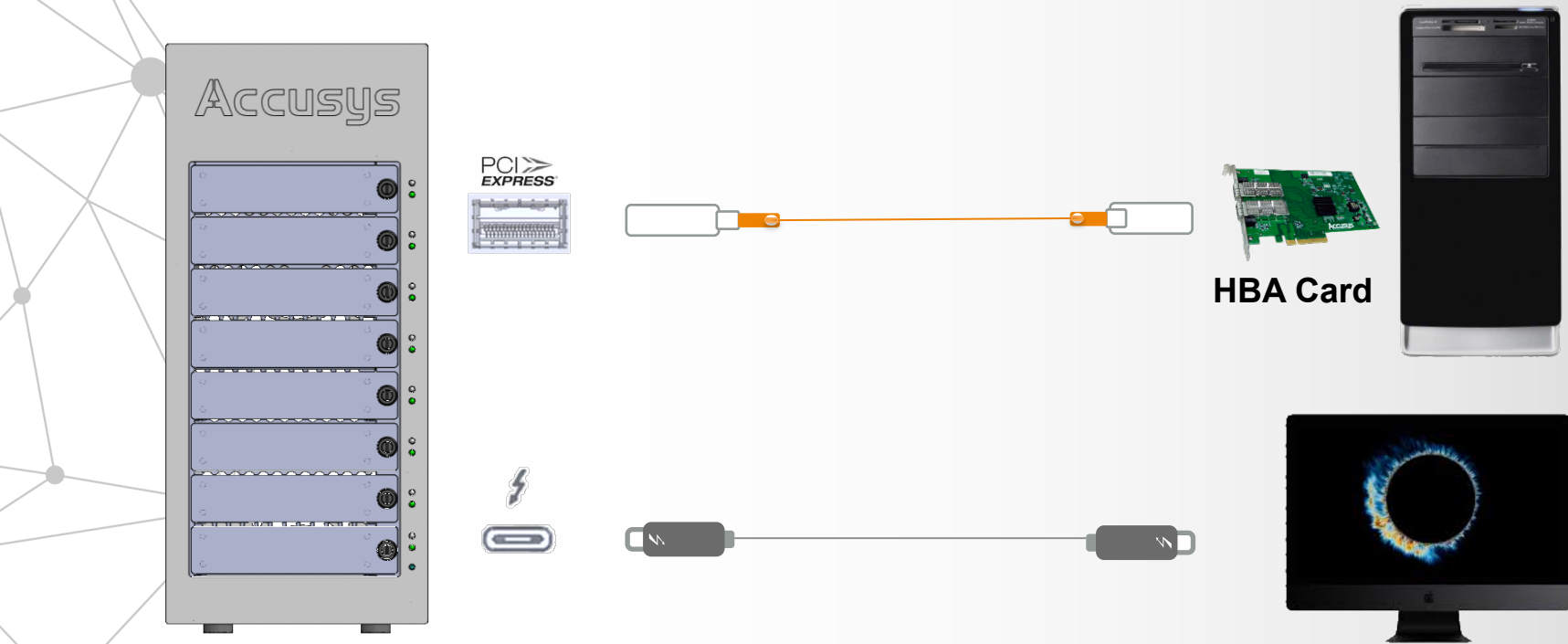
*optional

SSD portable tray allows user to quickly transfer their data from SSD to RAID. It is also compatible with 2.5" hard disk.



ExaSAN Carry – Data Transfer

Easy to transfer data between PC and Mac



***ExaSAN Carry should be connected to one host at a time.**

ExaSAN Carry – SAN Possible



With the world's first and only PCIe SAN switch, SW16-G3, optimized scalability and large group collaborative workflows become possible.

Why 8-bay Gamma Carry?

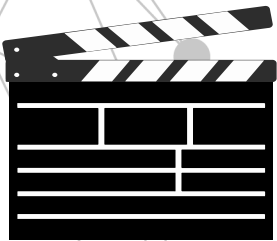
Better Performance

Gamma Carry

up to 2000 MB/s

5 or 6-bay storage

up to 1300 MB/s



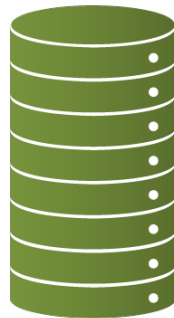
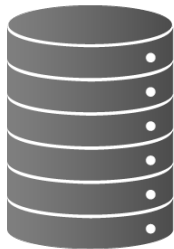
Same size,
as easy to carry



Larger Capacity

5 or 6-bay

8-bay

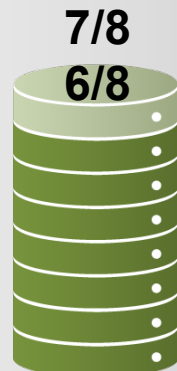


RAID 5
RAID 6



Higher Percentage of HDD Capacity Usage

R5: 4/5 or 5/6
R6: 3/5 or 4/6



Drive Compatibility



Enterprise Hard Disk



SSD

Spec

System and Controller

Model Name	Gamma Carry	ExaSAN Carry
System Type	8-bay Tower RAID system	
Host Interface	Thunderbolt 3 (40Gb/s) x 2	Thunderbolt 3 (40Gb/s) x 2, PCIe 3.0 (32Gb/s) x 1
Disk Interface	SAS/SATA 6Gb 3.5"/2.5" HDD/SSD	
Cache Memory	2G DDRIII 1866 with ECC-protected	

RAID Controller Functions

Online RAID Set Expansion and RAID Level Migration
Online bad block data recovery and reallocation
Online disk scrubbing with data refresh and parity
Disk health monitoring by S.M.A.R.T
Array Roaming and Drive Traveling
Mirror Snapshot for fast backup and restore
Disk Lag Proof Technology to guarantee disk timely response
Equalization Mode to smooth the performance of sequential I/Os and reduce large fluctuation

Management

Java-based RAIDGuard X GUI	
Event log saving in text file for quick troubleshooting	
Event notification by email (SMTP)	
LED indicator for RAID & disk drives status in front	
400W, 110V~240V power supply	
12 x 12cm and 6 x 6cm Fans with Smart Fan Control feature	
Weight	6.2kg / 13.67lbs
Dimensions (L x W x H)	240 x 150 x 318mm 9.4 x 5.9 x 12.5in